

The Extrel® MAX300™ series of quadrupole mass spectrometers is the economical High Performance solution for PAT in fermentation control applications.

The Extrel CMS MAX300 series of quadrupole mass spectrometers is an ideal PAT solution for monitoring bioprocess reactions. The Extrel MAX300's ability to monitor multiple components in multiple streams, speed of response, parts per billion (ppb) detection limit and flexible analysis will help you improve your fermentation control. The performance benefits include:

- **Reduced Cycle Time:** The Extrel MAX300 can analyze one component in approximately 400 milliseconds. This equates to one full sample analysis in less than 10 seconds. This speed of response enables you to monitor dozens of bioreactors with one analyzer.
- **Improved Yields:** The continuous monitoring of the bioreaction process gives the operator a full understanding of the health of the culture and the efficiency of the process. The analysis accuracy provided by the Extrel MAX300 allows the calculation of the Respiratory Quotient to within a standard deviation of 0.007.
- **Reduced waste:** The Extrel MAX300 has a dynamic range of 100% down to 10 ppb. Many fermentation process problems are indicated by the presence of part per million level components. Monitoring for these components will enable you to quickly adjust the process without comprising the batch quality.

Typical Analysis Information

The Extrel MAX300 is used to provide full, fast and precise analysis of the incoming air and the off-gas from the Fermenter. A typical Fermenter exhaust gas composition is shown in Figure 1 along with the expected Relative Standard Deviations, RSD[F], for each component.

Stream Composition						
	A	B	C	D	E	F
1	Name	Est Conc	Sens.	Det Mass	RIF	RSD[F]
2	NITROGEN	70%	1.0000	028	<0.01	0.03587
3	FORMALDEHYDE	0.1%	1.0000	029	5.251	2.372
4	OXYGEN	20%	0.9800	032	<0.01	0.06776
5	ARGON	0.93%	1.5000	040	<0.01	0.254
6	CARBON DIOXIDE	0.05%	1.8600	044	<0.01	0.9837
7	WATER	0.5%	0.8	018	<0.01	0.4743

Figure 1: Typical Fermenter Analysis Method

The analysis of oxygen and carbon dioxide, along with the analysis of inerts, is used to calculate the Respiratory Quotient (RQ), a major parameter in controlling the growth and health of the bacteria. Based upon the expected analysis performance RSD[F], of the Extrel MAX300, it is expected that the RQ can be calculated to within a standard deviation of 0.007.

The additional analysis of minor ppm/ppb level concentrations of by-products such as formaldehyde, methanol, acetic acid or ammonia allow for rapid process adjustment to avoid undesired reactions and batch quality problems. Figure 2 shows an analysis trend of fermentation headspace data, including formaldehyde, obtained via a MAX300 with Questor® 5 software. The standard deviation of the analysis data, as calculated by the trending program, is displayed for each component.

Application Background

With the advancement of PAT and a focus on process improvement and efficiency, there has been an increasing industry demand for accurate and quantifiable low level analysis.

In most fermentation processes the desired metabolic changes take place in a narrow environmental range. Tight control of parameters such as: temperature, aeration rate (dissolved oxygen) and pH is essential to achieve maximum yield and product quality.

Computerized process control in the fermentation industry becomes a necessity in order to minimize production costs and maintain product quality. Only a fast analyzer like a mass spectrometer can achieve the short analysis times required to optimize the fermentation process and still maintain a high quality measurement.

The Extrel MAX300 quadrupole mass spectrometer is the economical alternative to multiple infrared and oxygen analyzers installed on the top of each Fermenter. Extrel offers various inlet solutions to meet your sampling needs including the Extrel FASTValve, an 80 port high flow, rotary valve.

Key Application Facts

- The Dual Faraday and Electron Multiplier Detector and its Autoranging capabilities enable the MAX300 to achieve a continuous dynamic range of 100% down to 10 parts per billion.
- With a typical analysis cycle < 10 seconds/stream, the MAX300 is capable of monitoring 80 sample points in less than 15 minutes when equipped with the Extrel FASTValve, an 80 port high flow rotary valve.
- Extrel's Questor® 5 web based user interface has the capabilities to meet 21 CFR Part 11 requirements.
- The Extrel MAX300 supports a variety of industry standard communications including ethernet, Bidirectional MODBUS, MODBUS TCP/IP, OPC and analog communication protocols.

Extrel CMS maintains sales and service offices around the world. Please contact us for the office nearest you or visit our web site at <http://www.extrel.com>

FERMCONTRL 050608

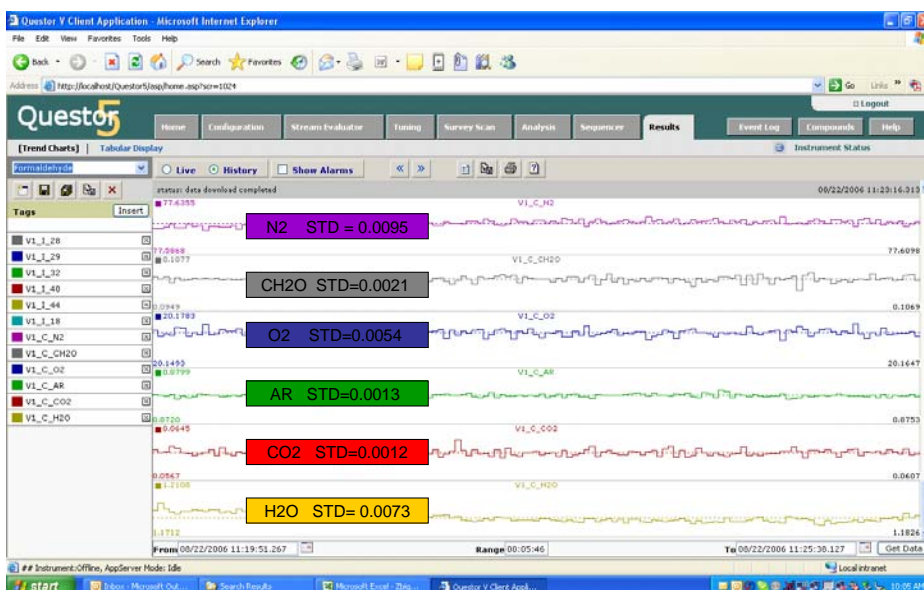


Figure 2: Fermentation data trend with Standard Deviations (STD)

Extrel MAX300-LG



Extrel MAX300-IG



Extrel® is a registered trademark of Extrel CMS, LLC. MAX300™ is a trademark of Extrel CMS, LLC. Questor® is a registered trademark of ABB Process Analytics, Inc.



Extrel CMS, LLC
575 Epsilon Drive
Pittsburgh, PA 15238-2838 USA

www.extrel.com

TEL: 412-963-7530 • FAX: 412-963-6578

© Extrel CMS, LLC 2008